

Welcome To Our Medical/Office/Institutional Tour Stop

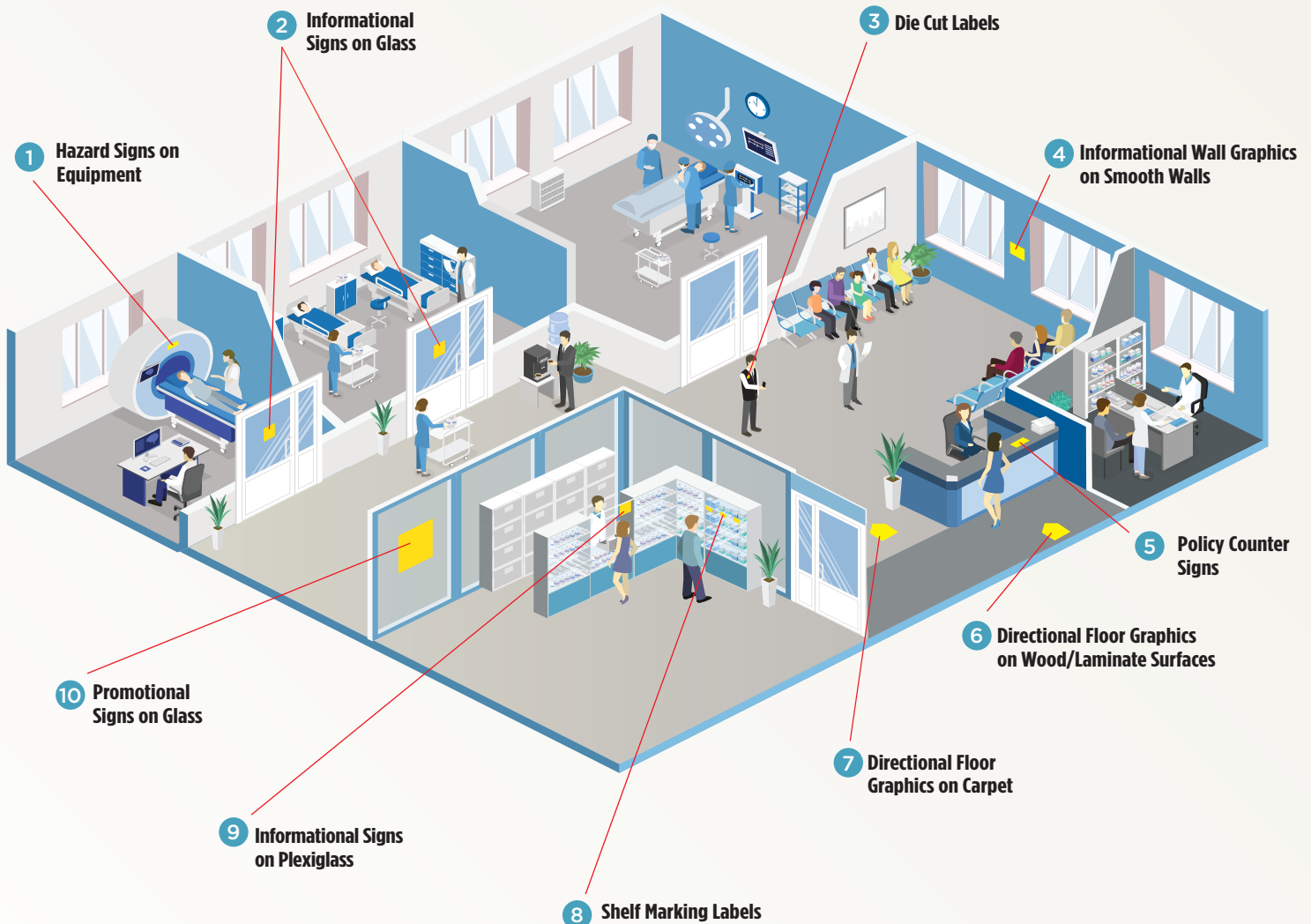
On this tour stop we examine the “What If” potential for pressure sensitive sheet applications in medical/office/institutional environments. Here you need solutions that are professional looking, durable, and communicate clearly, while being easy for your staff to manage. You won't find yourself limited by a shortage of material and adhesive combinations. As you tour our medical/office/institutional environment below, you will see the possibilities in the three primary types of communications needed to users of your facility:

- **Wayfinding** - providing directions to and marking destinations
- **Policy Information** - including safety, restriction, and hours of operation signs
- **Promotional** - product sales and campaign graphics



Visualize the Possibilities

Match up the applications shown below with the Product Suggestions Chart on the reverse side of this sheet for specific product considerations.



Pressure sensitive sheet labels, signage, and floor graphics offer a clean, professional way to communicate with staff and visitors.

Like our other "What If" tour stops, medical/office/institutional environments offer many different surfaces in a climate controlled setting. Convenience and a professional image are the hallmark of labels, signs, and graphics in these environments.

Wausau Coated Benefits/Key Factors

Our vinyl facestocks are durable and waterproof. Part of our Dual Digital product line, they are suitable for cross-platform printing on both HP Indigo sheet presses and many Production Toner digital presses.

Adhesives Options

Permanent is exactly as it sounds... our solventless adhesive works great for general purposes where a long-term application is needed.

Removable or Ultra Removable: There is a range of aggressiveness – some can be removed and replaced over and over again, and some can only be removed once or twice. Discuss your application and purpose with your sales rep.

Liner Options

We offer pressure sensitive solutions in multiple sheet sizes and offer the option of zero score or score back. The advantage of score back is the ease of removing the liner.

Below are a few suggested products for the applications shown on the map based on the key factors of pressure sensitive products.

Product Suggestions for Medical/Office/Institutional Environments		
See front side floor map for application possibilities.		
APPLICATIONS	SUGGESTED PRODUCTS*	
	Product Number - Facestock / Adhesive / Liner	Size
1 Hazard Signs on Equipment	WCD-0035 - White Vinyl / Perm / -SB-	12" x 18"
	WCD-0037 - White Vinyl / Perm / -O-	12" x 18"
2 Informational Signs on Glass	WCD-0043 - White Vinyl / Ultra Remo / -SB-	20.5" x 29.5"
	WCD-0044 - Clear Vinyl / Ultra Remo / -O-	12" x 18"
3 Die Cut Labels	DC72012 - 4"x 3-1/3" Uncoated White Laser Labels / 6-up	8.5" x 11"
	DC01874 - 2" Circle Green Fluorescent Laser Labels / 20-up	8.5" x 11"
4 Informational Wall Graphics on Smooth Walls	WCD-0036 - White Vinyl / Ultra Remo / -SB-	12" x 18"
	WCD-0038 - White Vinyl / Ultra Remo / -O-	12" x 18"
5 Policy Counter Signs	WCD-0094 - White Vinyl / Special Graphics Remo / -SB-	13" x 19"
	WCD-0040 - White Vinyl / Ultra Remo / -SB-	13" x 19"
6 Directional Floor Graphics on Wood/Laminate Surfaces	WCD-0094 - White Vinyl / Special Graphics Remo / -SB-	13" x 19"
	with WCD-0095 - Clear Textured Polypropylene Overlam	12.75" Rolls
	WCD-0096 - White Vinyl / Special Graphics Remo / -SB-	20.5" x 29.5"
	with WCD-0097 - Clear Textured Polypropylene Overlam	20" Rolls
7 Directional Floor Graphics on Carpet	WCD-0098 - White Vinyl / Carpet Remo / -SB-	13" x 19"
	with WCD-0095 - Clear Textured Polypropylene Overlam	12.75" Rolls
	WCD-0099 - White Vinyl / Carpet Remo / -SB-	20.5" x 29.5"
	with WCD-0097 - Clear Textured Polypropylene Overlam	20" Rolls
8 Shelf Marking Labels	WCD-0110 - Vinyl Shelf Markers / 8-up	11" x 8.5"
	WCD-0114 - 3 mil MTX VersaPly™ Shelf Markers, FSC® Certified / 8-up	11" x 8.5"
9 Informational Signs on Plexiglass	WCD-0044 - Clear Vinyl / Ultra Remo / -O-	12" x 18"
	WCD-0041 - Clear Polyester / Perm / -O-	12" x 18"
10 Promotions Signs on Glass	WCD-0044 - Clear Vinyl / Ultra Remo / -O-	12" x 18"
	WCD-0040 - White Vinyl / Ultra Remo / -SB-	13" x 19"

* NOTE: The products listed here are examples of application solutions. For product details and more options, visit www.wausaucoated.com

We recommend discussing your expectations and environment with your merchant and Wausau Coated sales rep. Testing may be required to get the best performance results.

VersaPly™ is a trademark of Wausau Coated Products, Inc. FSC® is a registered trademark of the Forest Stewardship Council® FSC® C008943



Experts In "What If..."

Wausau Coated Products, Inc.

7801 Stewart Avenue
Wausau, WI 54401
Phone: 800-345-8039

www.wausaucoated.com